

AUTROMASTER ISEMS

AutoMaster Integrated Safety and Emergency Management System Product Datasheet

Features

- User-friendly graphical user interface
- Presentation of monitoring and control for alarmed areas
- Enriched information regarding safety equipment, subsystems, etc.
- Synchronized network solution for information distribution
- Multi-language support
- System backup tools
- Watchdog for automated fault alerts
- Screen dimming for low light-interference
- Security clearance levels and user identification

Description/Application

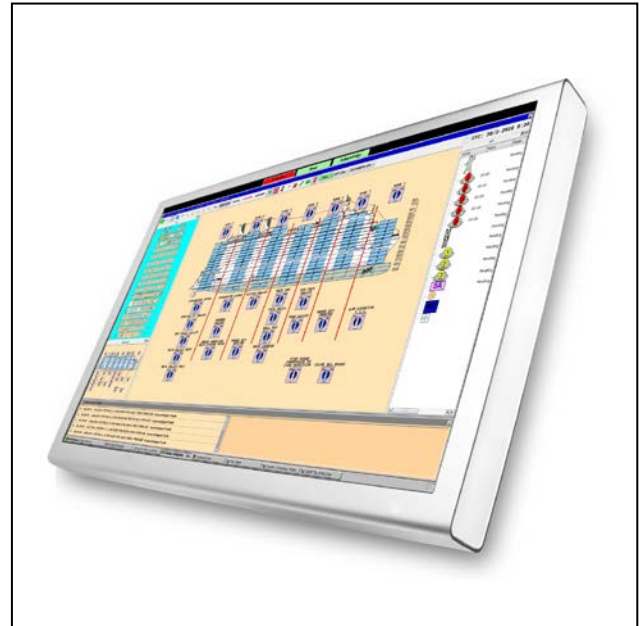
AutoMaster ISEMS is an Integrated Safety and Emergency Management System which can be used together with the AutoSafe Interactive Fire Detection System (version 3 and 4), AutoPrime Fire Detection System (version 2) and BS-100 systems.

The AutoMaster ISEMS has an intuitive control and monitoring interface, providing an easy-to-understand graphical presentation of the premises and events that may occur. Navigation is fast and instinctual, and the powerful zoom functions allow you to monitor all areas in great detail.

The system can be connected to a large number of fire-alarm panels of different types (such as operator, control or repeater panels) via a serial connection or an Ethernet network.

AutoMaster ISEMS uses colour-graphics for the display of system events (smoke/heat development), providing detailed information so that necessary actions can be taken. It provides historical overviews of measured values for specific detectors, as well as for the entire system; using the built-in report generator, these provide cost-efficient documentation and maintenance logs.

Control of the alarmed area and its subsystems are unlimited; core features include detector-group management for logical grouping of detectors;



enablement/disablement of detectors and groups; control of programmable logic controllers; door control; control of low-location lighting, CCTV systems and emergency lighting.

The system can be distributed on a synchronized network, ensuring information and control is available throughout the system. Duty control allows delegation of duty between networked AutoMaster PCs.

Graphical User Interfaces

AutoMaster ISEMS provides the following two graphical interfaces:

- Standard graphical user interface (default)
- AutoBrowser (introduced with AutoMaster ISEMS)

The graphical interfaces comprise display views, menu handling, buttons, panes, navigation techniques, system operating techniques, the change of mimics, the selection of points (detectors, manual call points, etc.).

Requirements

AutroMaster uses Linux as an operating system.

Computer platform	Operating system
PC	CentOS 5.11

For details on computer-hardware specifications, refer to Technical Specifications.

Technical specifications	
Compatible hardware	x86
Operating system	CentOS 5.6
Minimum resolution	1080 x 1024 pixels Recommended 1920 x 1080 pixels
Required features	CD-ROM
Required physical memory (minimum)	Minimum 2048Mb
Linux kernel	2.4.x/ 2.6.x
Required hard disk size	Minimum 300Gb
Required communication hardware	Serial port, Ethernet
Communication hardware for network installation	(Dual) Ethernet
Compatible fire-alarm systems	AutroSafe, Autroprime version 2 or later, BS-100. For detailed information on compatibility, refer to Compatibility Matrix in System Description.
Network capacity	Supports one master with four slaves
Supported connections	RS-232, RS-486, ethernet
Supported emergency lighting systems	DardoPlus, Dardo2
Supported protocols	ESPA 4.4.4, ModBus RTU, ModBus TCP/IP, ASAP, Saia, NMEA Siemens S7 PLC
Compatible systems	For detailed information on compatibility, refer to the Compatibility Matrix in the System Description. AutroSafe Autroprime 2.0 BS-100 v. 3.20; BS-60 slaves connected to BS-100; Saia PLC, Hernes CCTV

Installation Overview

AutroMaster ISEMS is connected to the fire detection system by Ethernet or serial interface, suitable interface cards may have to be installed into both the computer and the fire alarm panel.

AutroMaster Editions

AutroMaster ISEMS is the full AutroMaster edition, including all functionality. In addition, there are three editions; one for the oil & gas market, the maritime market, and the onshore market.

Functions/Modules	Oil&Gas	Maritime	Onshore	ISEMS
Basic functionality				
Fire management basic functions (AutroSafe, Autroprime 2.0 or later, and BS-100 interface)	x	x	x	x
MultiSensor control	x	x	x	x
Report generator	x	x	x	x
Control and monitoring of emergency lights/LLL	x	x	x	x
Extended functionality				
AutroSafe IFG unit support	x	NA	NA	x
Dual Safety (AutroSafe 4.3 or later)	x	x	x	x
Touch screen support	x	x	x	x
Decision support system/incident manager				x
Electronic plotting table				x
Training/simulation module				x
Event record and replay module				x
Video module (live video support CCTV)	x			x
Remote connect function				x
Message center module				x
Interfaces				
Hernes CCTV interface				x
System-S interface				x
NMEA interface				x
VDR output		x		x
Modbus interface		x	x	x
ESPA 4.4.4 interface		x	x	x

Part number	Description
116-PROG-AUTROMASTERISEMS	Full edition
116-PROG-AUTROMASTER-POG	Oil & Gas edition
116-PROG-AUTROMASTER-MAR	Maritime edition
116-PROG-AUTROMASTER-ONS	Onshore edition

For information on part numbers for available PCs and monitors, please refer to the Product Catalogue and Price Lists.