

Xenon Strobe Beacon

Alarmenhet Produktdatablad

Features

- EN54-23 VAD alarmenhet – CPR-kompatibel
 - UL1638 privat modus for brannalarmbruk
 - UL1638 nødalarmbruk
 - UL1638 generell signalisering
 - CAN/ULC-S526 brannalarmbruk
 - Automatisk synkronisering
 - Kontinuerlig drift
 - To M20 eller 1/2" NPT kabelføring
 - Dobbel pluggbar kabelterminering – Klasse A
 - Inngangsbeskyttelse IP66/IP67 Type 4/4X/13/3R
 - 3 bruker-valgbare blinkhastigheter
 - Diode-polarisert for bruk i overvåkede kretser
- EN54-23 VAD fire beacon – CPR compliant



Beskrivelse

Xenon Strobe Beacon er en kompakt og robust 5 Joule Xenon-blinklampe, ideell for alle signalapplikasjoner, inkludert brann, sikkerhet og prosesskontroll. UL/cUL-godkjent og CPR-kompatibel – testet i henhold til UL1638 og EN54-23. SIL1-kompatibel.

Den er automatisk synkronisert med en effektiv lysstyrke på 200 cd og har et brannhemmende, UV-stabilt IP66/IP67 Type 4/4X/13/3R kapsling som gjør enheten egnet for alle miljøer.

Enheden er tilgjengelig med flere monteringsalternativer og syv ulike linsefarger. Den er SIL1 & SIL2 Route 2H-kompatibel i henhold til IEC61508 (2010) som standard.

Enheden er pålitelig i drift og har en robust design.

Godkjenninger

- UL/cUL/ULC – File ref: E216937
- CSFM listing: 7300-2279:0510
- VdS CPR: (EN54-23) 0786-CPD-21247
- VdS: G211077
- EAC CU TR 043/2017: B.00291/21
- EAC: RU D-GB.GA05.B.12595-20
- RMRS Marine: No. 19.00193.278
- SIL1 & SIL2-godkjent iht. IEC61508 (2010)
- CE, UKCA

Xenon Strobe Beacon

Specification

Energy:	5 Joules(5Ws)
Flash rate:	1Hz (60 fpm) DC units: 1.5Hz (90 fpm) & Double strike
Peak Candela:	500,000 cd – calculated from energy (J)
Effective cd:	250 cd – calculated from energy (J)
Peak Candela:	86,935 cd* – measured ref. to I.E.S.
Effective cd:	200 cd* – measured ref. to I.E.S.
Lens colours:	Amber, Blue, Clear, Green, Magenta, Red & Yellow
Tube life:	Emissions may reduce to 70% after 8 million flashes
Safety Integrity Level:	SIL1 and SIL2 Route 2H IEC61508 (2010)
Ingress protection:	IP66/IP67 Type 4/4X/13/3R
Enclosure material:	High impact UL94 V0 & 5VA FR PC
Enclosure colour:	Red (RAL3000), Grey (RAL7038) & White
Lens colour filter:	Field replaceable UV stable PC
Cable entries:	2 x M20, 1/2"NPT clearance cable entries with blanking plugs
Terminals:	0.5 – 2.5mm ² (20-14 AWG)
Line monitoring:	Diode polarized for use in supervised circuits
Operating:	-40° to +55°C [-40° to +151°F]
Storage:	-40 to +70°C [-40° to +158°F]
Relative humidity:	95% at 20°C [68°F]
Vibration test:	35Hz for a duration 4Hr (UL1638)
Jarring test:	3ft/lb Energy (UL1638)
Impact test:	3x 5lb (UL1638)
MTBF DC:	234.16 years / 2,051,282 hours – MIL 217
MTBF AC:	265.17 years / 2,322,880 hours – MIL 217
Weight:	0.20kg / 0.44lbs

EN54-23

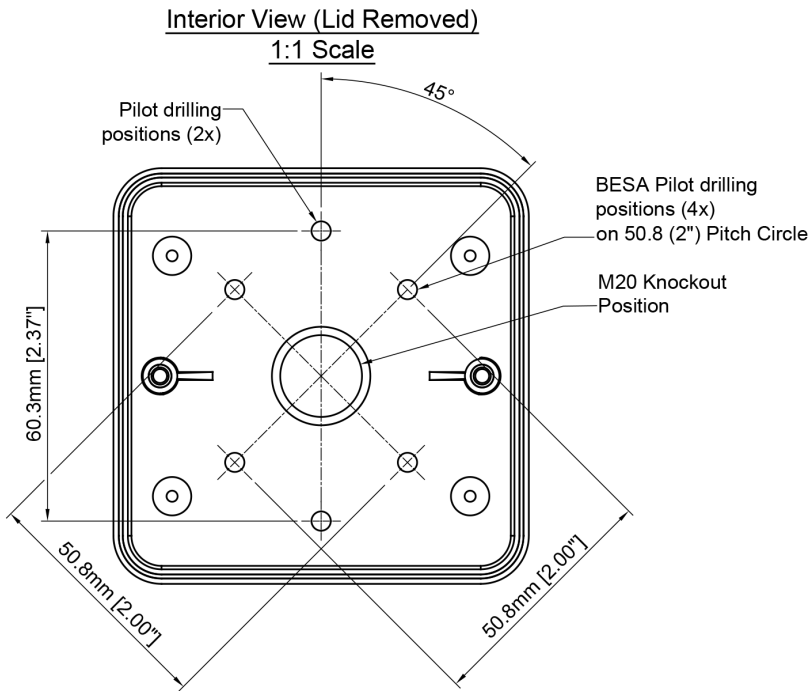
Information:

Unit:	Cat. C [Ceiling]	Cat. W [Wall]	Cat. O [Open]	Power
L101X 24Vdc Clear	C-96.8 V=326.9m ³	W-2.4-4.8 V=55.3m ³	O-4.8-10 V=230.4m ³	6W
L101X 24Vdc Red	C-32.6 V=15.9m ³	n/a n/a	O-1.9-3.6 V=13.0m ³	6W
L101X 48Vdc Clear	C-97 V=346.4m ³	W-2.5-5 V=62.5m ³	O-5-10 V=250.0m ³	8.4W
L101X 48Vdc Red	C-33 V=21.2m ³	n/a n/a	O-2-4 V=16.0m ³	8.4W

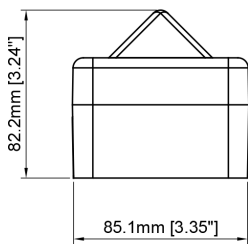
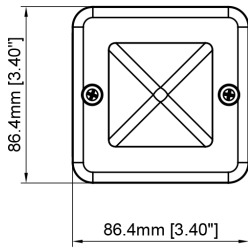
Artikelnummer	Beskrivelse
116-4340-006.0201	Xenon Strobe Beacon 24 VDC/300 mA Red
116-4340-006.0202	Xenon Strobe Beacon 24 VDC/300 mA Orange
116-4340-006.0203	Xenon Strobe Beacon 24 VDC/300 mA Clear
116-4340-006.0204	Xenon Strobe Beacon 24 VDC/300 mA Green
116-4340-006.0205	Xenon Strobe Beacon 24 VDC/300 mA Blue

Back box/cable entries: [e]	B M S	Back box without mounting lugs – 1 x rear 20mm entry Back box with mounting lugs – 2 x M20/1/2"NPT clearance Back box without mounting lugs – 2 x M20, 1/2"NPT clearance
Stopping plug material: [m]	A X	ABS Stopping plug not present. Must be selected for B type back box
Equip. tag/Duty label: [s]	0 1 2	No equip. tag or Duty label 316 (A4) St/St Equip. tag/Duty label Metalised Polyester Equip. tag/Duty label
Product version: [v]	A	UL/cUL, VdS, CPR, RMRS, EAC, CE, UKCA – SIL1 & SIL2
Product option: [o]	1 X	Standard product Custom configuration – contact E2S
Enclosure: [x]	R G W	Red Grey White
Lens colour: [y]	A B C G M R Y	Amber Blue Clear Green Magenta Red Yellow
NOTE:		EN54-23: Red & Clear lens colours UL1638 Private mode fire: All lens colours UL1638 Emergency mode: Clear, Amber, Green & Yellow lens colours

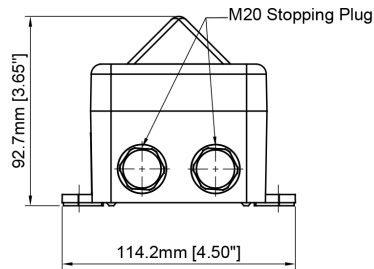
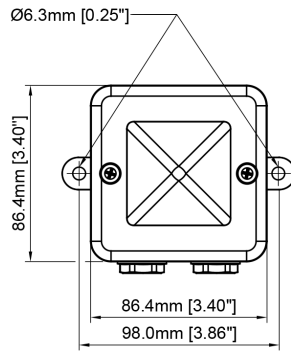
Dimensjoner



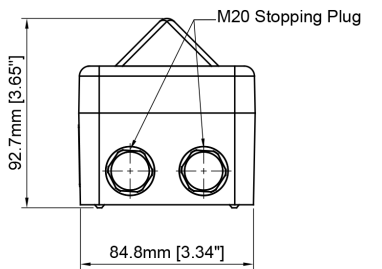
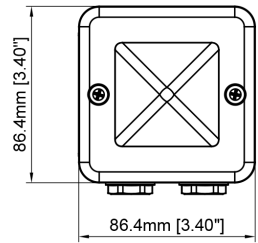
Backbox (B)



Backbox (M)



Backbox (S)



Tone Table

S 1	Description	S 2	S 3	S 4
T 1	1000 Continuous - PFEER Toxic Gas	Any	T 2	T 44
T 2	1200/500 @ 1Hz Sweeping - DIN / PFEER P.T.A.P.	Any	T 3	T 44
T 3	1000 @ 0.5Hz (1s on, 1s off) Intermittent - P...	Any	T 2	T 44
T 4	1.4KH-1.6KHz 1s, 1.6KHz-1.4KHz 0.5s - NF C 48...	Any	T 24	T 1
T 5	544(100mS)/440 (400mS) - NF S 32-001	Any	T 19	T 1
T 6	1500/500 - (0.5s on , 0.5s off) x3 + 1s gap - ...	Any	T 44	T 1
T 7	500-1500Hz Sweeping 2 sec on 1 sec off - AS4428	Any	T 44	T 1
T 8	500/1200Hz @ 0.26Hz(3.3s on, 0.5s off) - NEN ...	Any	T 24	T 35
T 9	1000 (1s on, 1s off)x7 + (7s on, 1s off) - IM...	Any	T 34	T 1
T 10	1000 (1s on, 1s off)x7 + (7s on, 1s off) - IM...	Any	T 34	T 1
T 11	420(0.5s on, 0.5s off)x3 + 1s gap - ISO 8201 ...	Any	T 1	T 8
T 12	1000(0.5s on, 0.5s off)x3 + 1s gap - ISO 8201...	Any	T 1	T 8
T 13	422/775 - (0.85 on, 0.5 off) x3 + 1s gap - ...	Any	T 1	T 8
T 14	1000/2000 @ 1Hz - Singapore	Any	T 3	T 35
T 15	300 Continuous	Any	T 24	T 35
T 16	440 Continuous	Any	T 24	T 35
T 17	470 Continuous	Any	T 24	T 35
T 18	500 Continuous - IMO code 2 (Low)	Any	T 24	T 35
T 19	554 Continuous	Any	T 24	T 35
T 20	660 Continuous	Any	T 24	T 35
T 21	800 Continuous - IMO code 2 (High)	Any	T 24	T 35
T 22	1200 Continuous	Any	T 24	T 35
T 23	2000 Continuous	Any	T 3	T 35
T 24	2400 Continuous	Any	T 20	T 35
T 25	440 @ 0.83Hz (0.60s on, 0.60s off) Intermittent	Any	T 44	T 8
T 26	470 @ 0.9Hz (0.55s on, 0.55s off) Intermittent	Any	T 44	T 8
T 27	470 @ 5Hz (0.10s on, 0.10s off) Intermittent	Any	T 44	T 8
T 28	544 @ 1.14Hz (0.43s on, 0.44s off) Intermittent	Any	T 24	T 8
T 29	655 @ 0.875Hz (0.57s on, 0.57s off) Intermittent	Any	T 44	T 8
T 30	660 @ 0.28Hz (1.80s on, 1.80s off) Intermittent	Any	T 24	T 8
T 31	660 @ 3.3Hz (0.15s on, 0.15s off) Intermittent	Any	T 24	T 8
T 32	745 @ 1Hz (0.50s on, 0.50s off) Intermittent	Any	T 24	T 8

S 1	Description	S 2	S 3	S 4
T 33	800 (0.25s on, 1.00s off) Intermittent	Any	T 24	T 8
T 34	800 @ 2Hz (0.25s on, 0.25s off) - IMO code 3...	Any	T 24	T 8
T 35	1000 @ 1Hz (0.50s on, 0.50s off) Intermittent	Any	T 24	T 8
T 36	2400 @ 1Hz (0.50s on, 0.50s off) Intermittent	Any	T 24	T 8
T 37	2900 @ 5Hz (0.10s on, 0.10s off) Intermittent	Any	T 24	T 8
T 38	363/518 @ 1Hz (0.50s / 0.50s) Alternating	Any	T 8	T 19
T 39	450/500 @ 2Hz (0.25s / 0.25s) Alternating	Any	T 8	T 19
T 40	554/440 @ 1Hz (0.50s / 0.50s) Alternating	Any	T 24	T 19
T 41	554/440 @ 0.65Hz (0.76s / 0.76s) Alternating	Any	T 8	T 19
T 42	561/760 @ 0.83Hz (0.60s / 0.60s) Alternating	Any	T 8	T 19
T 43	780/600 @ 0.96Hz (0.52s / 0.52s) Alternating	Any	T 8	T 19
T 44	800/1000 @ 2Hz (0.25s / 0.25s) Alternating	Any	T 24	T 19
T 45	970/800 @ 2Hz (0.25s / 0.25s) Alternating	Any	T 8	T 19
T 46	800/1000 @ 0.875Hz (0.57s / 0.57s) Alternating	Any	T 24	T 19
T 47	2400/2900 @ 2Hz (0.25s / 0.25s) Alternating	Any	T 24	T 19
T 48	500/1200 @ 0.3Hz (1.67s / 1.67s) Sweeping	Any	T 24	T 12
T 49	560/1055 @ 0.18Hz (2.73s / 2.73s) Sweeping	Any	T 24	T 12
T 50	560/1055 @ 3.3Hz (0.15s / 0.15s) Sweeping	Any	T 24	T 12
T 51	600/1250 @ 0.125Hz (4s / 4s) Sweeping	Any	T 24	T 12
T 52	660/1200 @ 1Hz (0.50s / 0.50s) Sweeping	Any	T 24	T 12
T 53	800/1000 @ 1Hz (0.50s / 0.50s) Sweeping	Any	T 24	T 12
T 54	800/1000 @ 7Hz (0.07s / 0.07s) Sweeping	Any	T 24	T 12
T 55	800/1000 @ 50Hz (0.01s / 0.01s) Sweeping	Any	T 24	T 12
T 56	2400/2900 @ 7Hz (0.07s / 0.07s) Sweeping	Any	T 24	T 12
T 57	2400/2900 @ 1Hz (0.50s / 0.50s) Sweeping	Any	T 24	T 12
T 58	2400/2900 @ 50Hz (0.01s / 0.01s) Sweeping	Any	T 24	T 12
T 59	2500/3000 @ 2Hz (0.25s / 0.25s) Sweeping	Any	T 24	T 12
T 60	2500/3000 @ 7.7Hz (0.65s / 0.65s) Sweeping	Any	T 24	T 12
T 61	800Hz Motor Siren	Any	T 24	T 12
T 62	1200Hz Motor Siren	Any	T 24	T 12
T 63	2400Hz Motor Siren	Any	T 24	T 12
T 64	Simulated Bell	Any	T 21	T 12